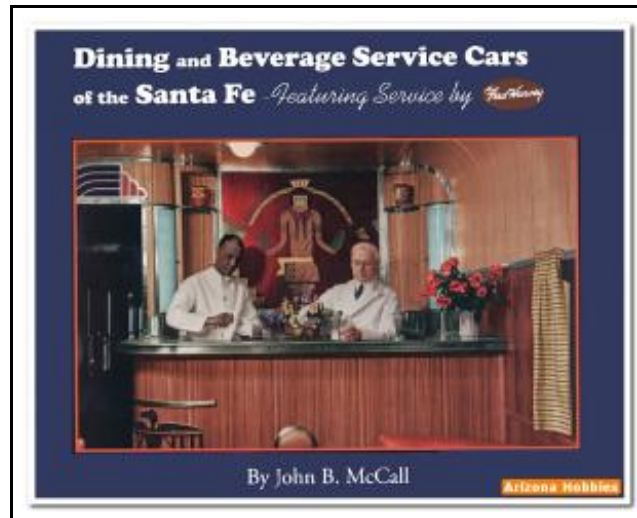


Santa Fe Railway Railway Dining and Beverage Service Cars



Filesize: 3.42 MB

Reviews

If you need to adding benefit, a must buy book. It really is writter in straightforward words and phrases rather than difficult to understand. Your life period is going to be change the instant you total reading this ebook.

(Letha Okuneva)

SANTA FE RAILWAY RAILWAY DINING AND BEVERAGE SERVICE CARS



To download **Santa Fe Railway Railway Dining and Beverage Service Cars** PDF, please follow the button below and download the ebook or have access to additional information which might be relevant to SANTA FE RAILWAY RAILWAY DINING AND BEVERAGE SERVICE CARS ebook.

Santa Fe Railway Railway HMS, 2006. hardcover. Book Condition: New. Dining and Beverage Service Cars of the Santa Fe by John B. McCall For over 90 years the names of the Santa Fe Railway and Fred Harvey were synonymous passenger train and hospitality of the finest quality. After the partnership adopted the persona of the of the Native American cultures of the Southwest, their services were carried on with a style that became legendary. In this Volume Number 3 in the Santa Fe Railway Passenger Car Reference Series, noted Santa Fe authority John B. McCall not only details the dining and beverage service cars once owned by Santa Fe, but also explores that unique partnership between Santa Fe and Fred Harvey, first begun in 1876 with a Harvey Lunchroom, expanded to Harvey resort hotels after the turn of the 20th century, thence to luxury transcontinental train service culminating in the lightweight extra-fare Super Chief of 1937. Richly illustrated with hundreds of photographs and period menus and ephemera, many in color, Dining and Beverage Service Cars of she Santa Fe - Featuring Service by Fred Harvey - seeks to distill within the covers of one Volume the very essence of what made Santa Fe a great railroad. Contents: Foreword and Introduction, pp. 7-21; HEAVYWEIGHT CARS: Composite and Buffet Library Cars, pp. 24-62; Dining Cars, pp. 63-108; Lounge Cars, pp. 109-132; Parlor Cars, pp. 133-150; Cafe Observation Cars, pp. 151-177; LIGHTWEIGHT CARS Baggage Lounge Cars, pp. 180-185; Dining Cars, pp. 186-214; Lounge and Parlor Observation Cars, pp. 215-267; SERVICE BY FRED HARVEY .with Service by Fred Harvey, pp. 268-310; Epilogue, pg. 311; Appendix: Selected China and Silver Patterns, pp. 312-331; Santa Fe Passenger Car External Paint Schemes, pp. 332-333; Pullman Sleeping Cars Owned (1/2 interest) to January, 1889. Santa Fe Railway Historical...



[Read Santa Fe Railway Railway Dining and Beverage Service Cars Online](#)



[Download PDF Santa Fe Railway Railway Dining and Beverage Service Cars](#)

Relevant Books



[PDF] Art appreciation (travel services and hotel management professional services and management expertise secondary vocational education teaching materials supporting national planning book)(Chinese Edition)

Access the web link under to read "Art appreciation (travel services and hotel management professional services and management expertise secondary vocational education teaching materials supporting national planning book)(Chinese Edition)" PDF document.

[Download eBook »](#)



[PDF] Republic 3: The Gods of War

Access the web link under to read "Republic 3: The Gods of War" PDF document.

[Download eBook »](#)



[PDF] Conned

Access the web link under to read "Conned" PDF document.

[Download eBook »](#)



[PDF] Roadhouse Blues

Access the web link under to read "Roadhouse Blues" PDF document.

[Download eBook »](#)



[PDF] The Easter Story: Miniature Edition

Access the web link under to read "The Easter Story: Miniature Edition" PDF document.

[Download eBook »](#)



[PDF] Everything Your Baby Would Ask: If Only He or She Could Talk

Access the web link under to read "Everything Your Baby Would Ask: If Only He or She Could Talk" PDF document.

[Download eBook »](#)